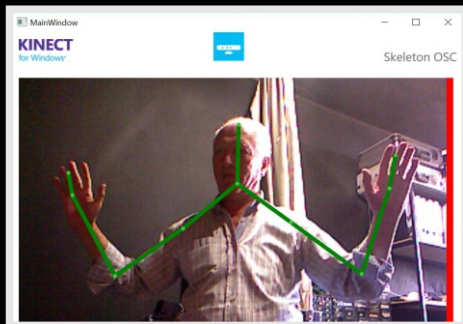


SkeleTrack

OSC Wi-Fi

Skeleton Tracking System



Specifications:

The SkeleTrack module consists of a Kinetic Camera System that can be used to track body movements. Depending on the model, the system can track 20 or 26 body joints returning X,Y and Z positional data.Zones can also be setup to track movement in an area of the frame.The message protocol is OSC (Open Sound Control). Like all of our other devices they are supported within the PressureMesh Hub.

CPU:

An embedded miniature PC/Windows 10 Wi-Fi 802.11 b/g/n data communications

Software:

Complete Free SDK for custom software design
Example Open Sound Control Application with source code (visual studio)
Example Wireless router (visual studio)
Documentation API of Open Sound Control message format

An Example of sent OSC messages
(There are many more)

```
/skelitrack/hipcentre/x,<float>
/skelitrack/hipcentre/y,<float>
/skelitrack/hipcentre/z,<float>
/skelitrack/spine/x,<float>
/skelitrack/spine/y,<float>
/skelitrack/spine/z,<float>
/skelitrack/shouldercentre/x,<float>
/skelitrack/shouldercentre/y,<float>
/skelitrack/shouldercentre/z,<float>
/skelitrack/head/x,<float>
/skelitrack/head/y,<float>
/skelitrack/head/z,<float>
/skelitrack/shoulderleft/x,<float>
/skelitrack/shoulderleft/y,<float>
/skelitrack/boundary/index,<float>
/skeletrack/boundary/name <string>
```

Unsure of what options are best for your setup?

Email us: sales@performancemesh.com

www.performancemesh.com

